

One Earth Solar Farm

Volume 6.0 Environmental Statement [EN010159]

Volume 3

Figure 6.1a: Study Area

Figure 6.1b: Designated Sites and Priority Habitats within the Study Area

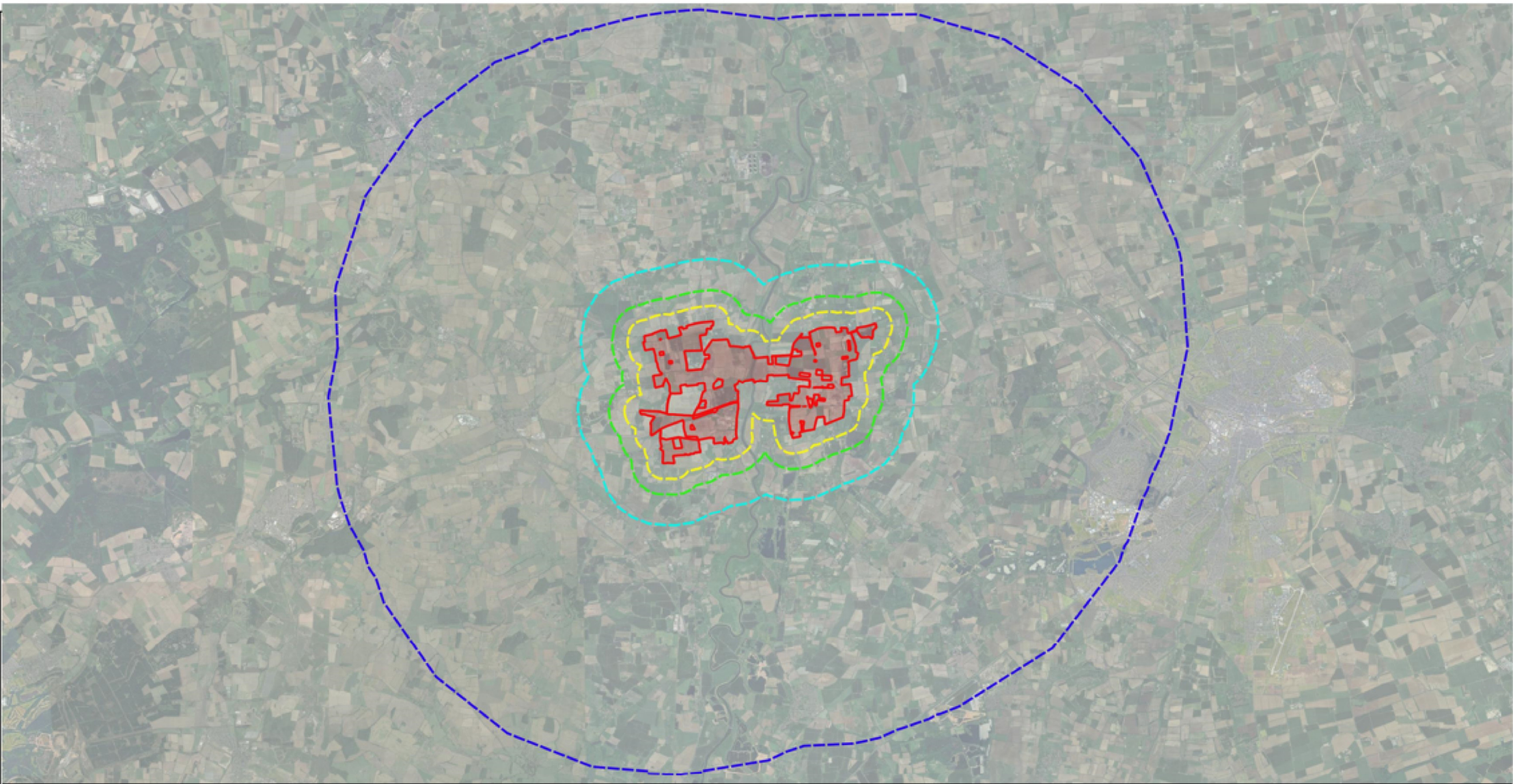
Figure 6.2: Zone of Influence (Zoi)

July 2025

Document Reference: EN010159/APP/6.20.1

Revision 03

Infrastructure Planning (Applications: Prescribed Forms and Procedure) Regulations 2009
- Reg 5 (2) (a)



Client:
One Earth Solar Farm Ltd

Project:
One Earth Solar Farm

Planning Inspectorate Scheme Ref: EN010159

Environmental Statement Volume 2

Drawing Title:
Figure 6-1 A: Study Area

Project:
14529A One Earth Solar

Drawn: RS

Design: RS

Approved: AK

2025-02-14

Rev.
02

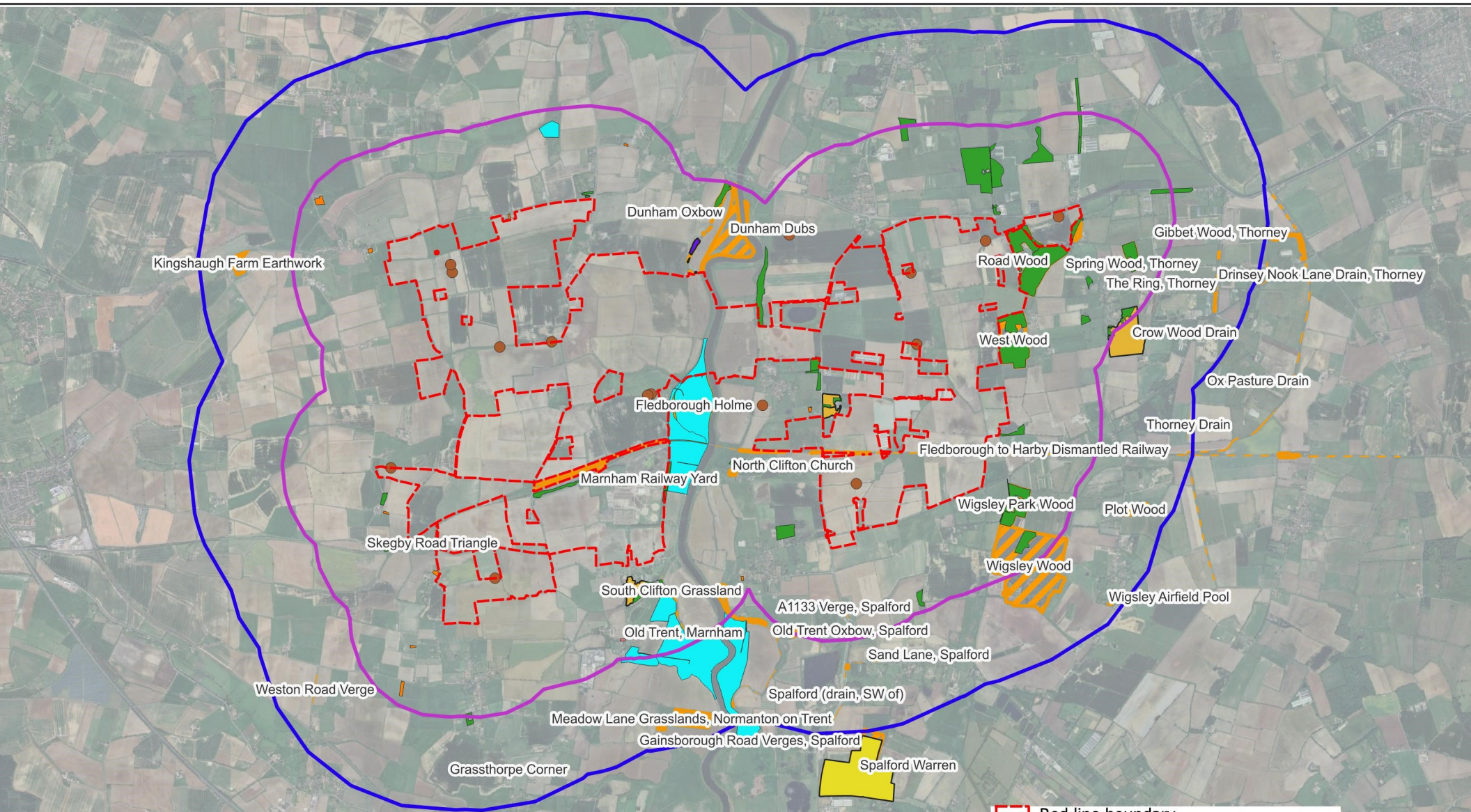
0 2.5 5 km



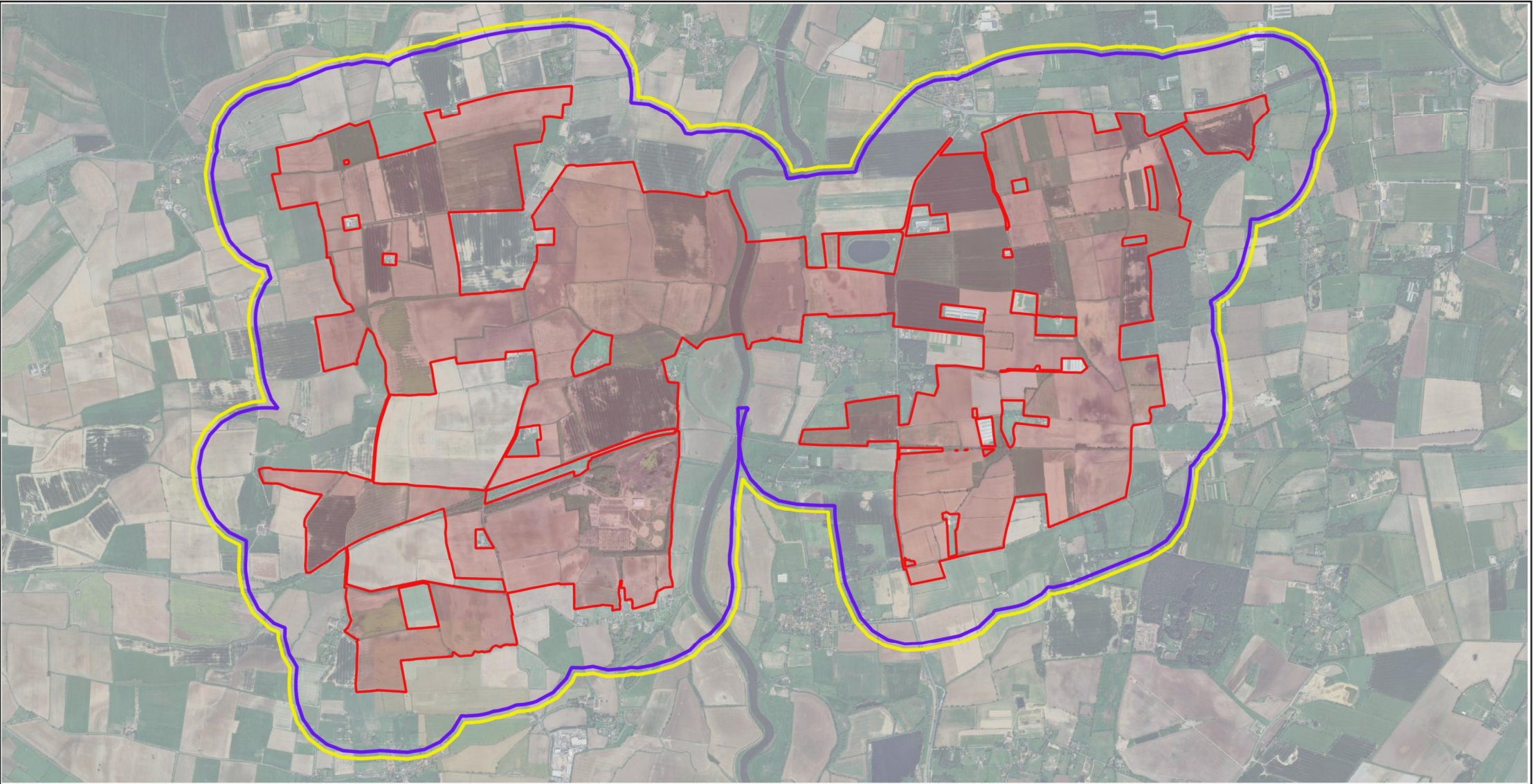
Key

-  Red line boundary
-  0.5km buffer
-  1km buffer
-  2km buffer
-  10km buffer





<div>Client:</div> <div>One Earth Solar Farm Ltd</div>	<div>Drawing Title:</div> <div>Figure 6-1 B: Designated Sites and Priority Habitats within the study area</div>			<div><div><div></div></div>Red line boundary</div> <div><div></div>2km buffer</div> <div><div></div>Sites of Special Scientific Interest (SSSI)</div> <div><div></div>1km buffer</div> <div><div></div>Local Wildlife Sites</div> <div>Priority Habitats</div> <div><div></div>Coastal and floodplain grazing marsh</div> <div><div></div>Deciduous woodland</div> <div><div></div>Good quality semi improved grassland</div> <div><div></div>Lowland fens</div> <div><div></div>Traditional orchard</div> <div><div></div>Wood pasture and parkland</div> <div><div></div>Veteran trees</div>
<div>Project:</div> <div>One Earth Solar Farm</div>	<div>Project:</div> <div>14529A One Earth Solar</div>		<div>Rev.</div> <div>01</div>	
	<div>Drawn:</div> <div>RS</div>	<div>Design:</div> <div>RS</div>	<div>Approved:</div> <div>AK</div>	
<div>Planning Inspectorate Scheme Ref: EN010159</div>	<div>2025-07-21</div>	<div>012 km</div> <div><div></div></div>		
<div>Environmental Statement Volume 2</div>				



Client:
One Earth Solar Farm Ltd

Project:
One Earth Solar Farm

Planning Inspectorate Scheme Ref: EN010159

Environmental Statement Volume 2

Drawing Title:
Figure 6-2: Zone of Influences (ZoI)

Project:
14529A One Earth Solar

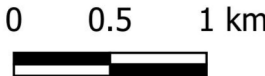
Drawn: RS

Design: RS

Approved: AK

2025-02-14

Rev.
01



Key

- Red line boundary
- 450m ZoI
- 500m ZoI





one earth
solar farm